

NAME

GRADE, TEACHER

SCHOOL

City of Pasadena

Public Art Walk Activity Guidebook

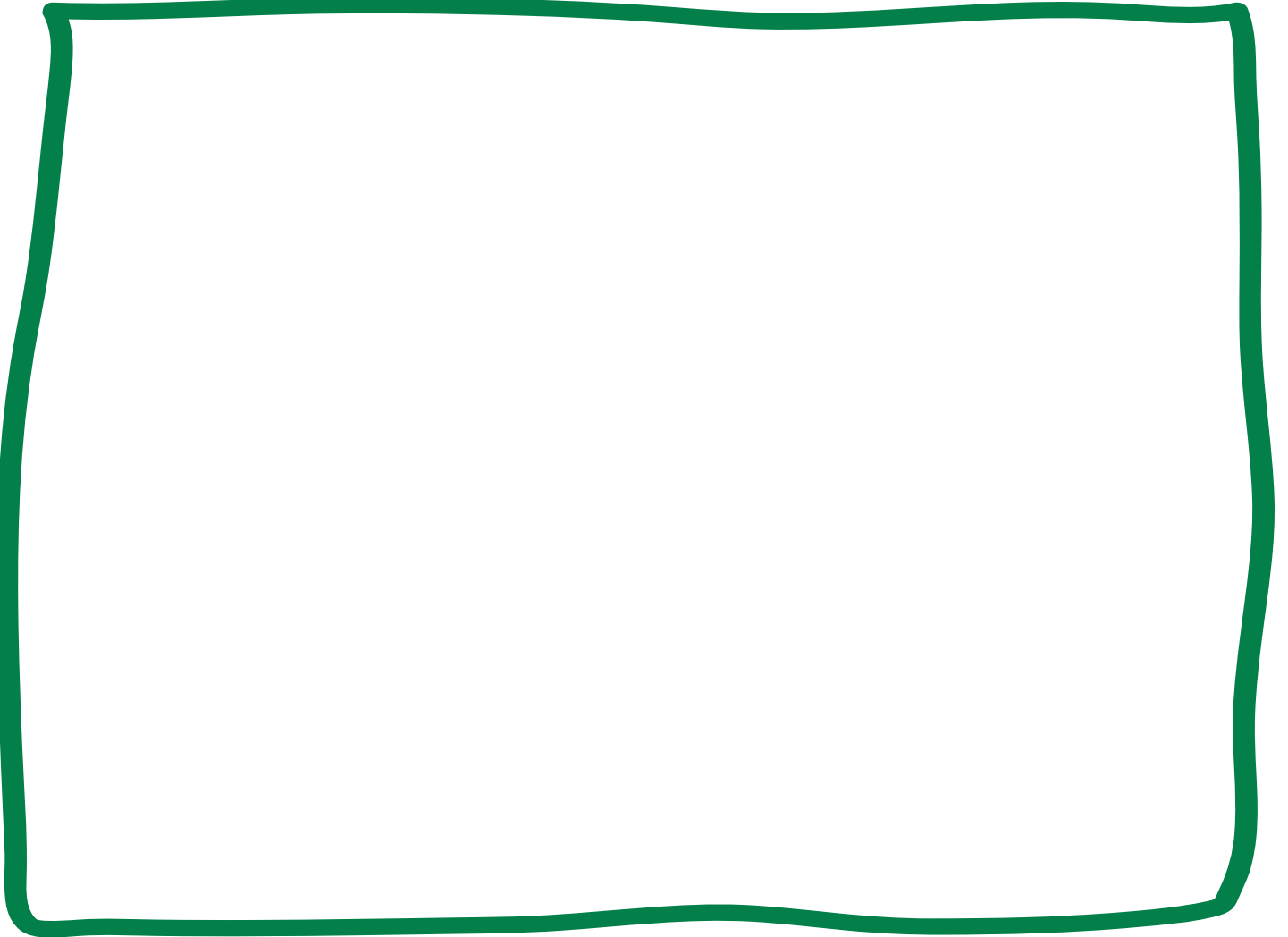
With Side Street Projects



sidestreet.org

WHAT DOES AN ARTIST LOOK LIKE?

DRAW AN ARTIST!



CIRCLE YOUR FAVORITE ART WORDS.

s p a c e

SHAPES

COLOR

texture

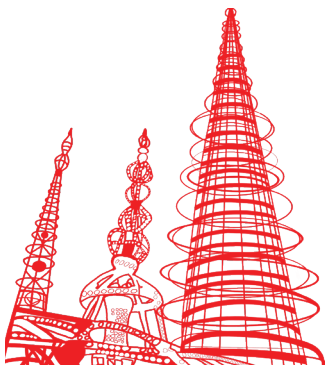
FORM

line

value

WHAT DO ARTISTS CREATE?

DRAW A LINE TO MATCH THE IMAGE TO THE DEFINITION.



MURAL: Artwork done on a wall.

SCULPTURE: A three-dimensional work of art.

PAINTING: The art of creating pictures using colors, tones, shapes, lines, and textures, typically on a flat surface.

PERFORMING ARTS: A type of art that is created in front of or presented to an audience by the artist.

Pasadena Robinson Memorial

3



Designed by Ralph Helmick, John Outterbridge & Stuart Schechter in 1997.
95 N. Garfield Ave.

A monument of the brothers Jackie and Mack Robinson. Jackie was the first African-American to play in Major League Baseball for the Brooklyn Dodgers in 1947. Mack won a silver medal in the 1936 Olympics for the 200 meter dash.

DRAW A PORTRAIT OF SOMEONE YOU THINK IS UNIQUE IN YOUR COMMUNITY.

PORTRAIT: A two or three-dimensional artwork created in the image of a person or animal's face or head and shoulders.

WHAT DO THE LIONS AT CITY HALL REPRESENT?
WRITE YOUR ANSWERS INSIDE THE RED LINES.



HOW MANY LIONS DID YOU SEE AT CITY HALL?



Pasadena City Hall

Designed by Bakewell and Brown in 1927.
100 Garfield Ave.

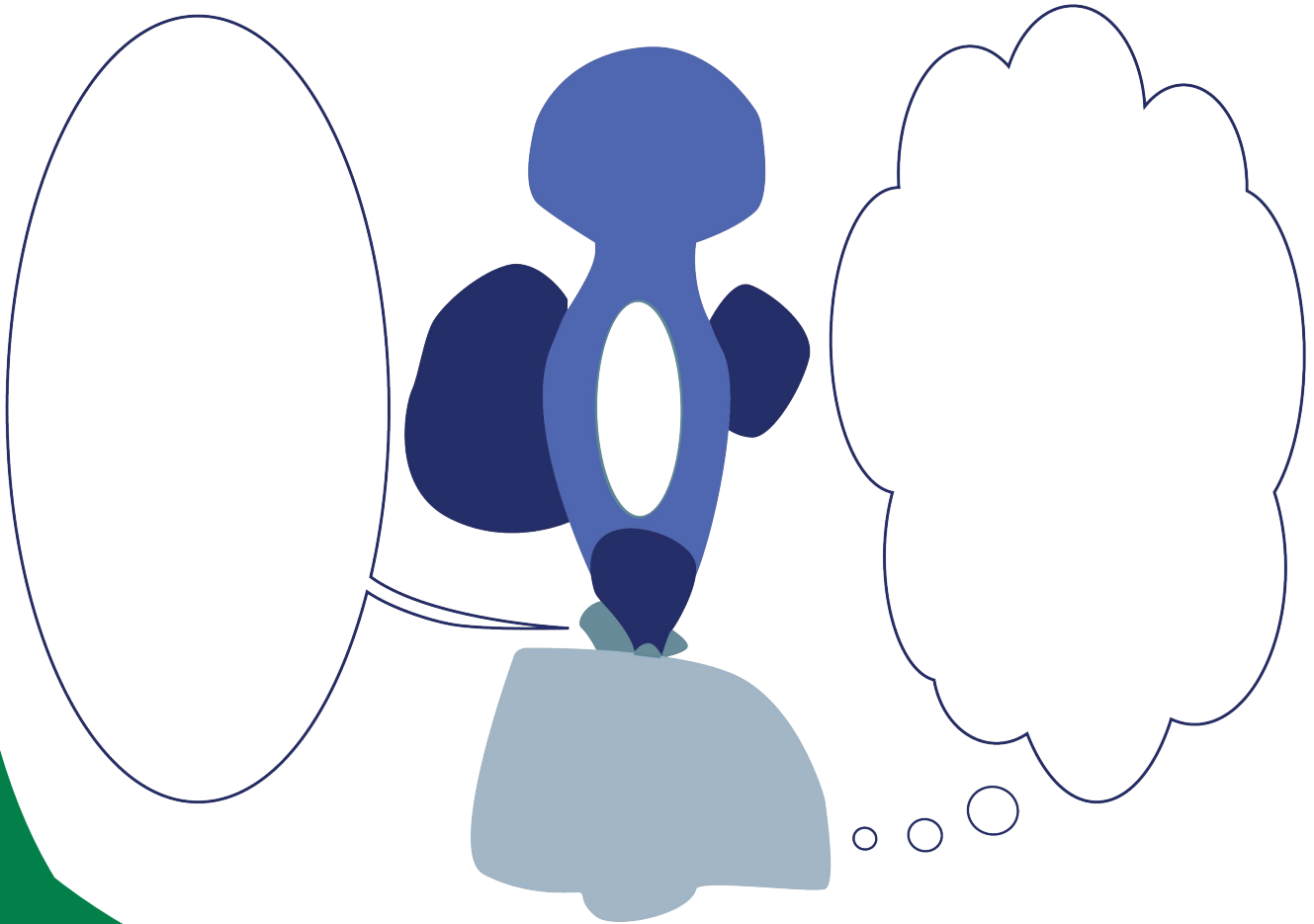
Pasadena City Hall is the center of government for Pasadena and is an example of the 1920s architecture movement called *City Beautiful*. The architects built City Hall in the California Mediterranean style, which draws from ancient architecture. The open courtyard with the pillars comes from Roman inspiration.



WHAT'S YOUR THOUGHT?

1. Write down what the Dreamer is thinking? What is the Fish saying?

SITE-SPECIFIC: The word "site" means "place". "Site-specific" means that the art was made especially for this place.



Designed by Michael Lucero in 1990.
130 S. Euclid Ave. / Plaza Las Fuentes

Dreamer with Fish Fountain refers to a series of eight site-specific sculptural fountains located throughout the Plaza Las Fuentes.

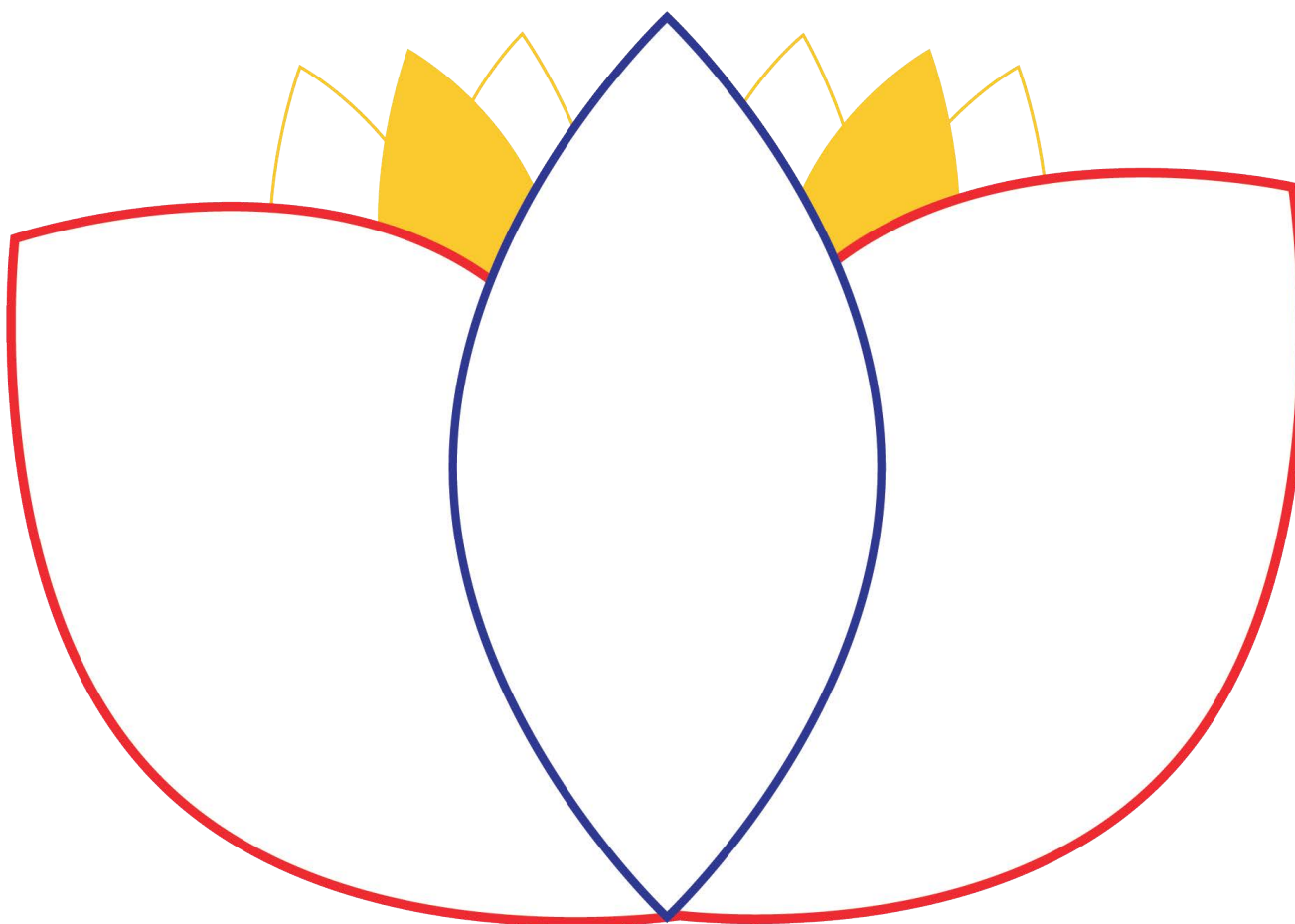
Designed by Joyce Kozloff in 1990.
130 S. Euclid Ave./ Plaza Las Fuentes

Joyce Kozloff's *Pasadena, City of Roses* refer to the patterned tile walls found throughout Plaza Las Fuentes. The patterns are based on ancient Egyptian, Greek, and Islamic patterns.



RUB DIFFERENT PATTERNS FROM THE TILE WALL IN THE SPACES BELOW.

PATTERN: The repetition of anything: shapes, lines, or colors.



Pasadena, City of Roses

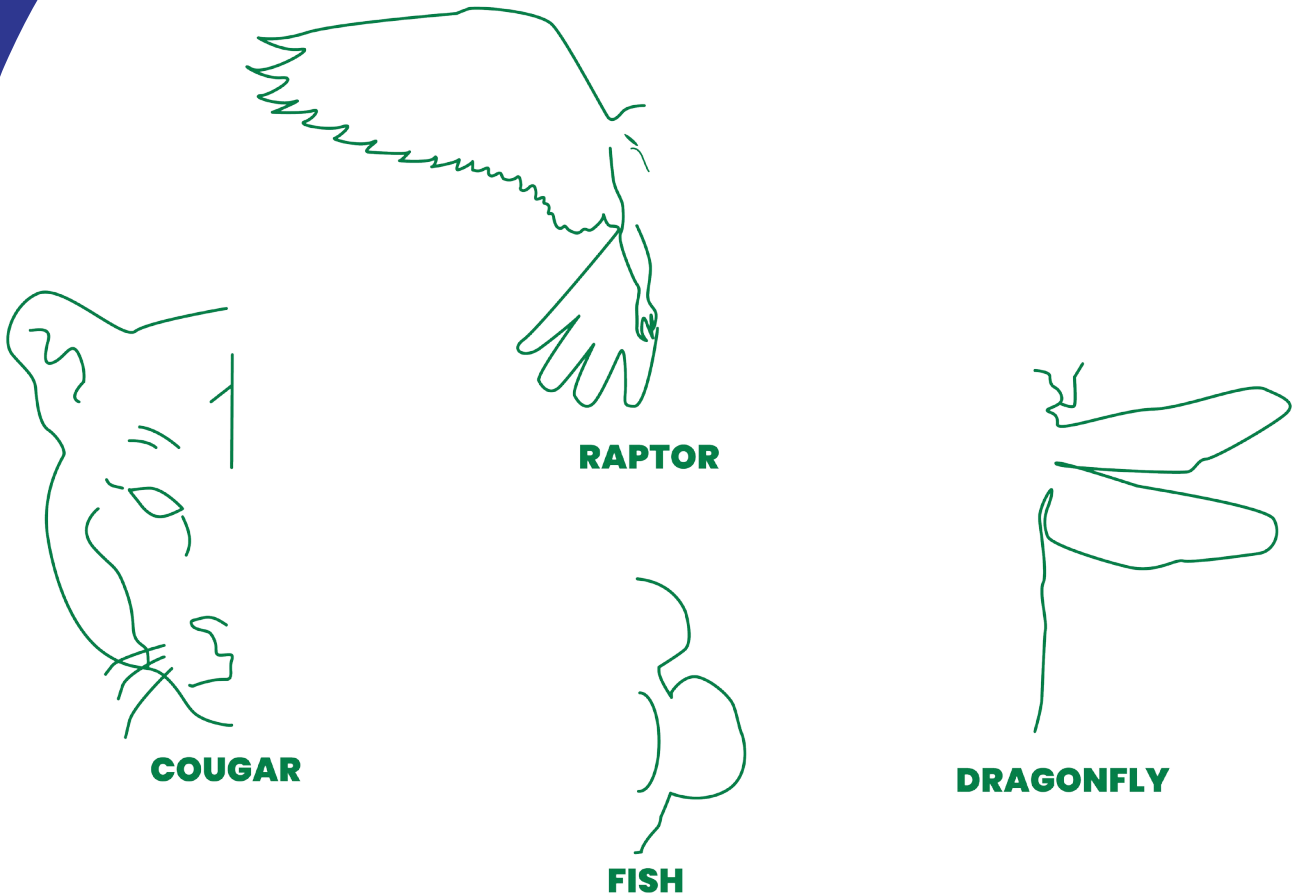


Designed by Jun Kaneko in 2003.
385 E. Colorado Blvd. on Los Robles Ave. / Western Asset Plaza

A large scale ceramic sculpture that sits in a landscaped recess facing the Pacific Asia Museum. The 1,200 pound, hand-built glazed ceramic sculpture intentionally fills the space. Part of the "Dango" series, each one is unique and can be found all over the world.

Kioku "Memory"

**ASSUME THESE ANIMALS ARE SYMMETRICAL.
DRAW THE OTHER HALF.**



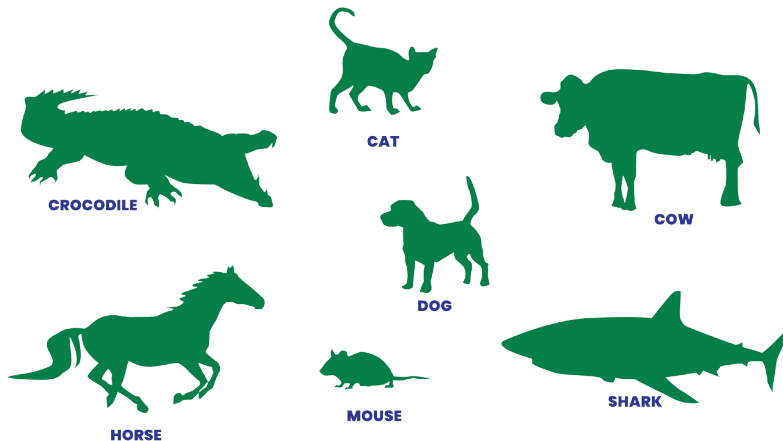
COUGAR

RAPTOR

DRAGONFLY

FISH

CIRCLE THE ANIMALS THAT WEIGH AS MUCH AS KIOKU.



CROCODILE

CAT

COW

DOG

HORSE

MOUSE

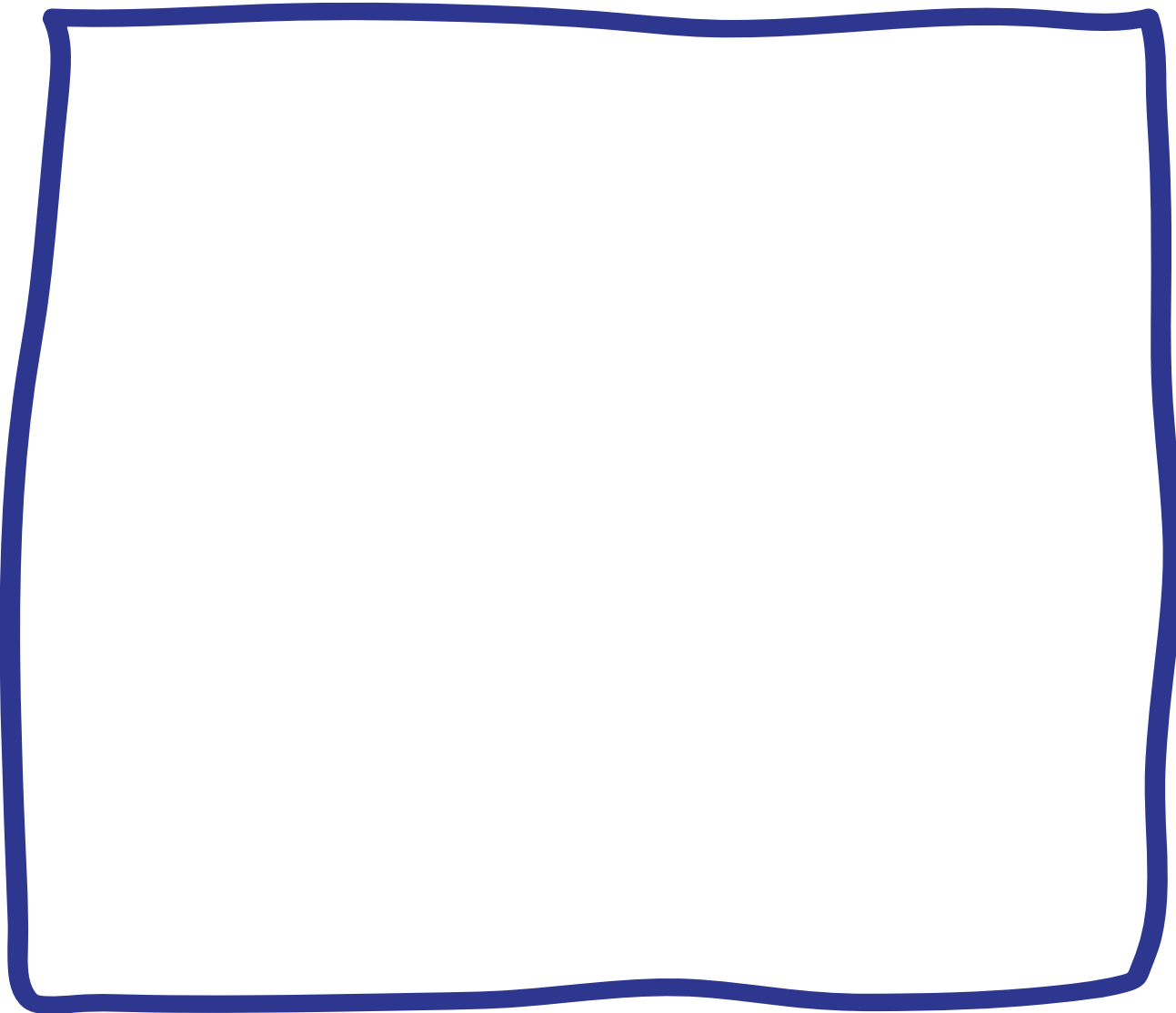
SHARK

ANSWER KEY: COW, HORSE, SHARK, CROCODILE

SYMMETRY: A type of balance where two halves are mirror images of each other.

MURAL: Artwork done on a wall.

DRAW A FEW SHAPES FROM THE MURAL THAT GRAB YOUR ATTENTION.



Kaloseidos

REPETITION: A way of joining elements so that the same elements are used over and over again.

Designed by Ralph Bacerra in 2003.
385 E. Colorado Blvd. / Western Asset Plaza

Over 3,000 shiny, lustrous and matte surfaces give the circle, square and triangle elements a visual dynamic within the collage. Bacerra's work is influenced by his travels, Imari ware, enameled silver, gold, and celadon works.





Designed by Gwynn Murrill in 2008.
355 E. Colorado Blvd.

Gwynn Murrill's art captures the essence of Southern California's animals, like bighorn sheep, in a remarkable way. Her fountain is inspired by indigenous species from the San Gabriel Mountains. Nature's beauty comes to life through her work.

Bighorn Fountain

WHAT NATIVE ANIMAL WOULD YOU
PUT ON TOP OF THE FOUNTAIN?



TEXTURE: the feel,
appearance, or
consistency of a surface.

I SPY...

INTAGLIO: A design carved or engraved into a material.

WHAT HAVE YOU SEEN SO FAR?

COUGAR

LION

DRAGONFLY

BIGHORN

RAPTOR

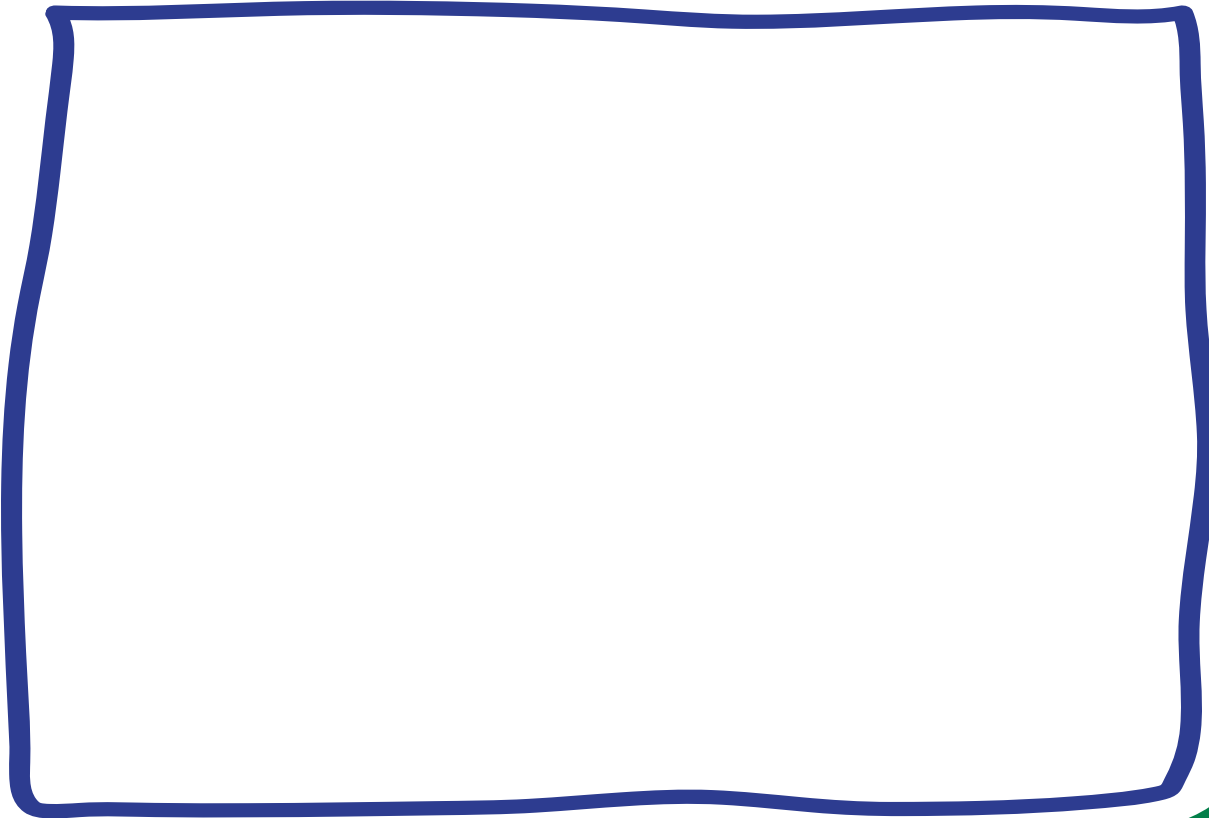
SNAIL

TURTLE

FISH

FROG

DRAW THE HABITAT THE COUGAR LIVES IN.



Cougar Intaglio

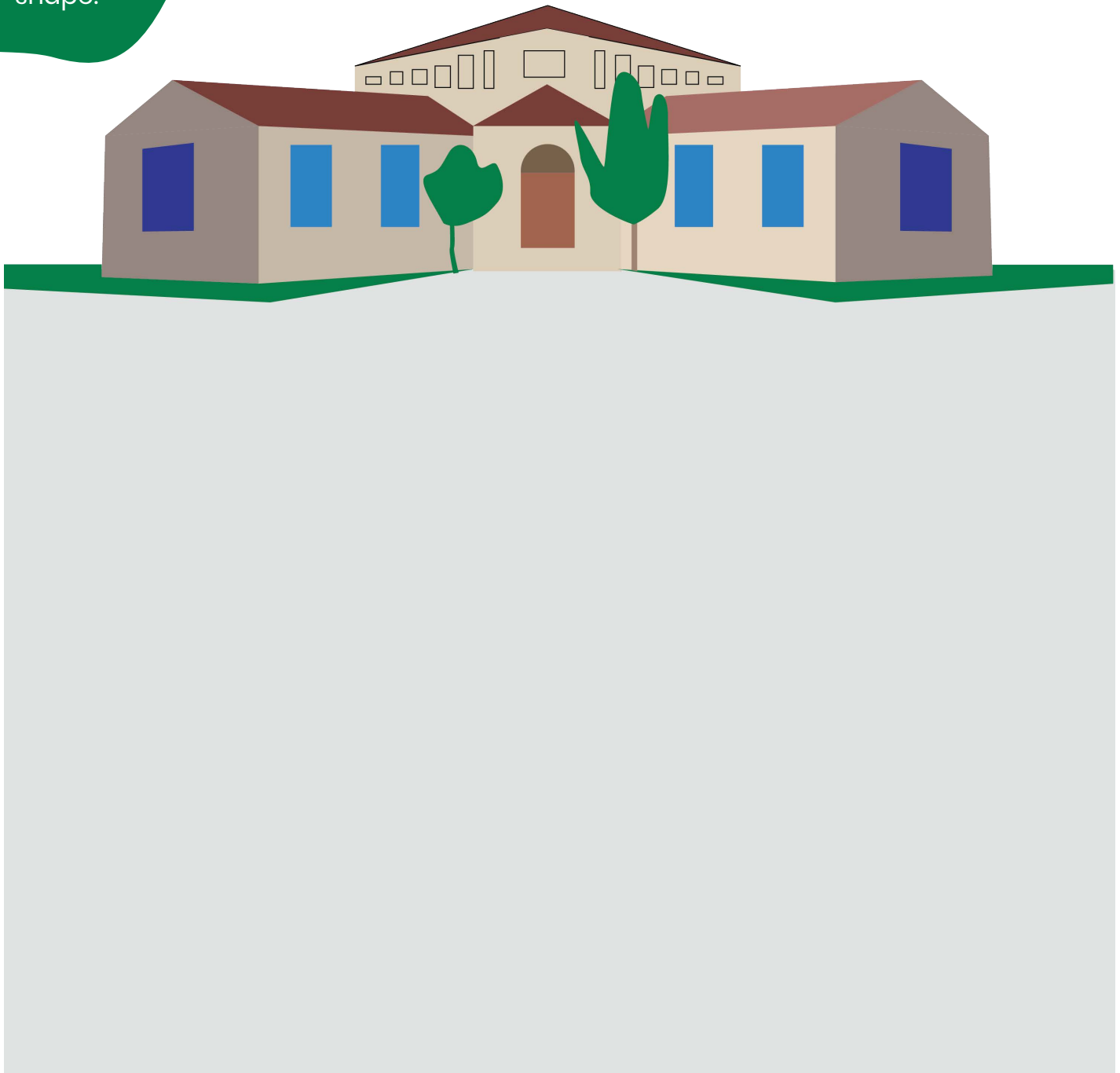
Designed by Gywnn Murrill in 2008.
355 E. Colorado Blvd on Euclid Ave.

The *Cougar Intaglio* was inspired by the arid climates set in and adjacent to the mountains, common to the City of Pasadena and the state of Montana.



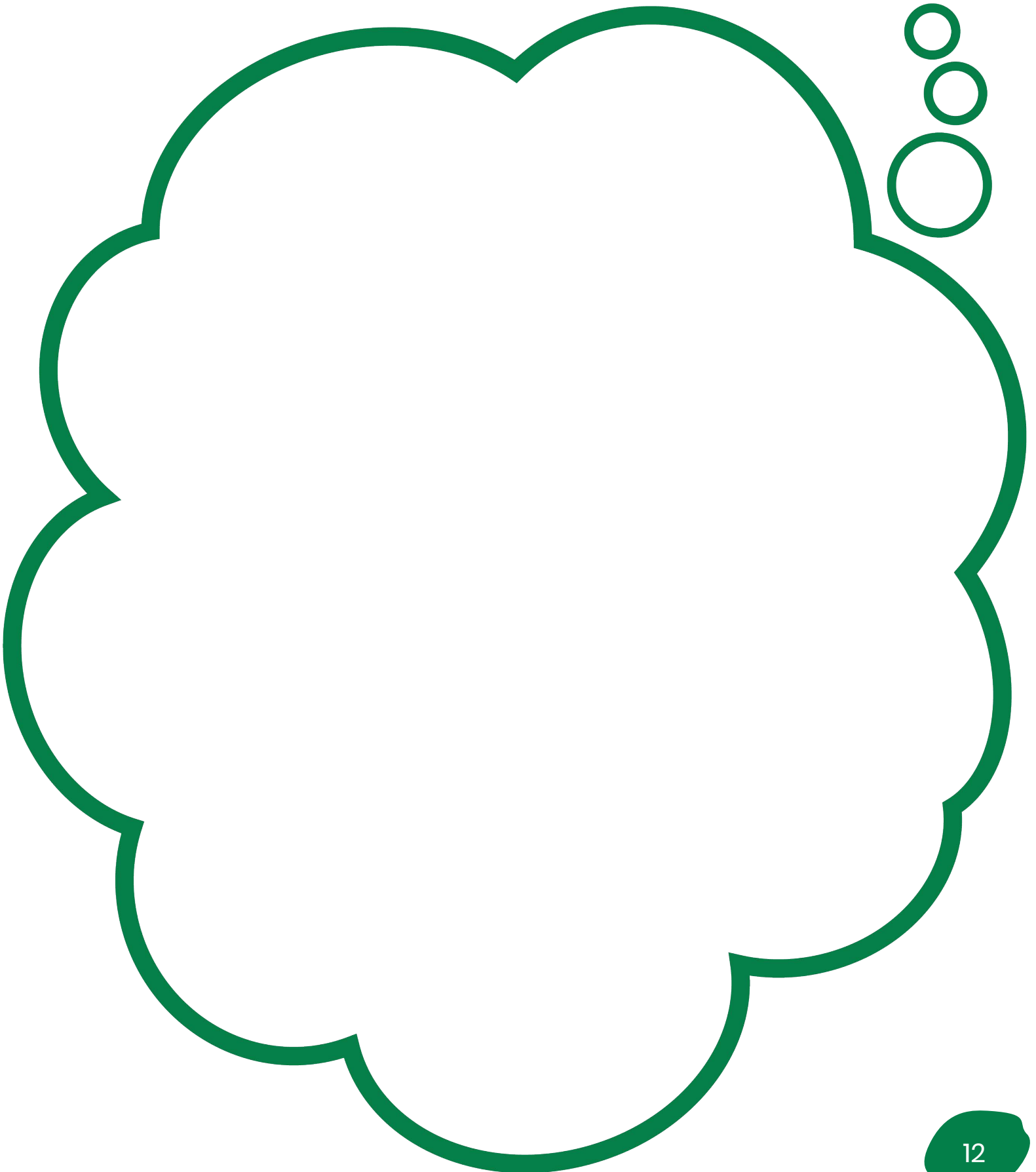
HAVE YOU NOTICED AN EMPTY SPACE IN YOUR NEIGHBORHOOD?

FORM: A three-
dimensional
shape.

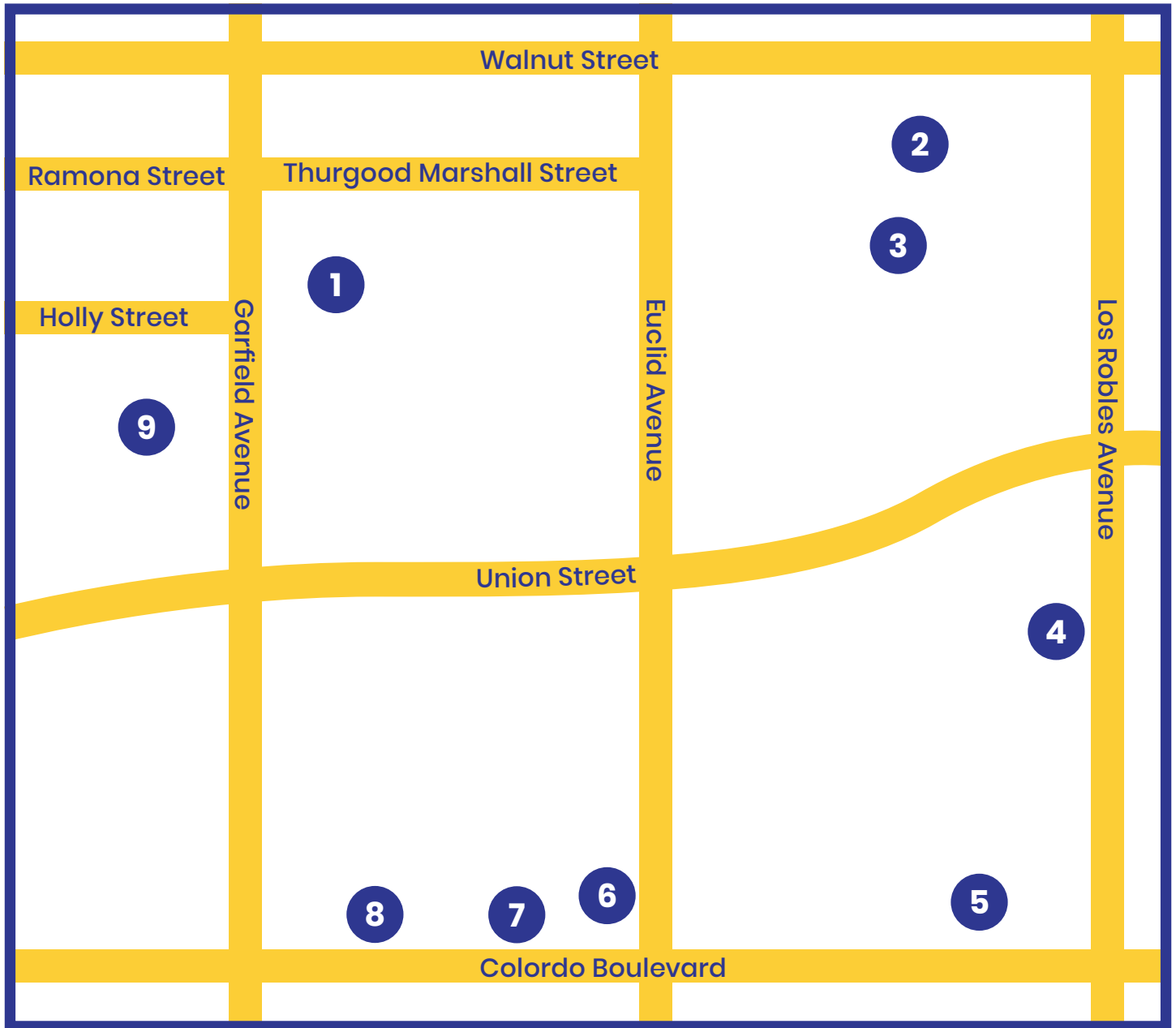


CLOSE YOUR EYES AND IMAGINE WHAT KIND OF SCULPTURE WOULD FIT PERFECTLY IN THAT SPOT. WHAT WOULD IT LOOK LIKE? WHAT WOULD IT BE MADE OUT OF? DRAW YOUR MASTERPIECE, AND LET'S SEE WHAT THE FUTURE HOLDS FOR THAT EMPTY SPACE.

DRAW MORE PUBLIC ART IDEAS.



PUBLIC ART WALK MAP



- | | |
|------------------------------|------------------------------|
| 1 Pasadena City Hall | 6 Cougar Intaglio |
| 2 Dreamer with Fish Fountain | 7 Raptor Intaglio |
| 3 Pasadena, City of Roses | 8 Big Horn Fountain |
| 4 Kioku "Memory" | 9 Pasadena Robinson Memorial |
| 5 Kaloseidos | |

ACKNOWLEDGEMENTS

A special thanks to Pasadena Unified School District Arts Coordinator, Karen Anderson, former Pasadena Unified School District Arts Coordinator, Jen Olson and Program Assistant Nehal Shahin, Rochelle Branch, City of Pasadena Cultural Affairs, and Jamie Powell at Pasadena Educational Foundation.

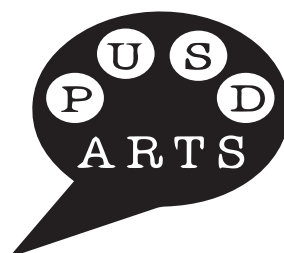
Thank you to the National Endowment for the Arts and City of Pasadena for funding the original workbook, and the California Arts Council for funding the second edition.

This workbook is funded as part of the NEA OUR TOWN Public Art Project *My Pasadena*, a City of Pasadena public art project with Side Street Projects as a partner.

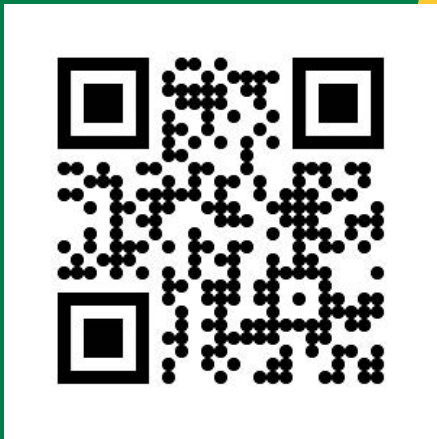
Workbook layout and design by Joanne Deip Hung and Cat Yang. Modifications by Milly J. Correa.

For our virtual tour visit:

www.sidestreet.org/my-masterpieces-virtual-tour



VISIT OUR WEBSITE



DEDICATED TO
LESLIE FISCHER
1971-2016

&

FELECIA LENEY WILLIAMS
"FE-LOVE"
1980 - 2021